

A3, B3

Food Grade Brushless DC pump

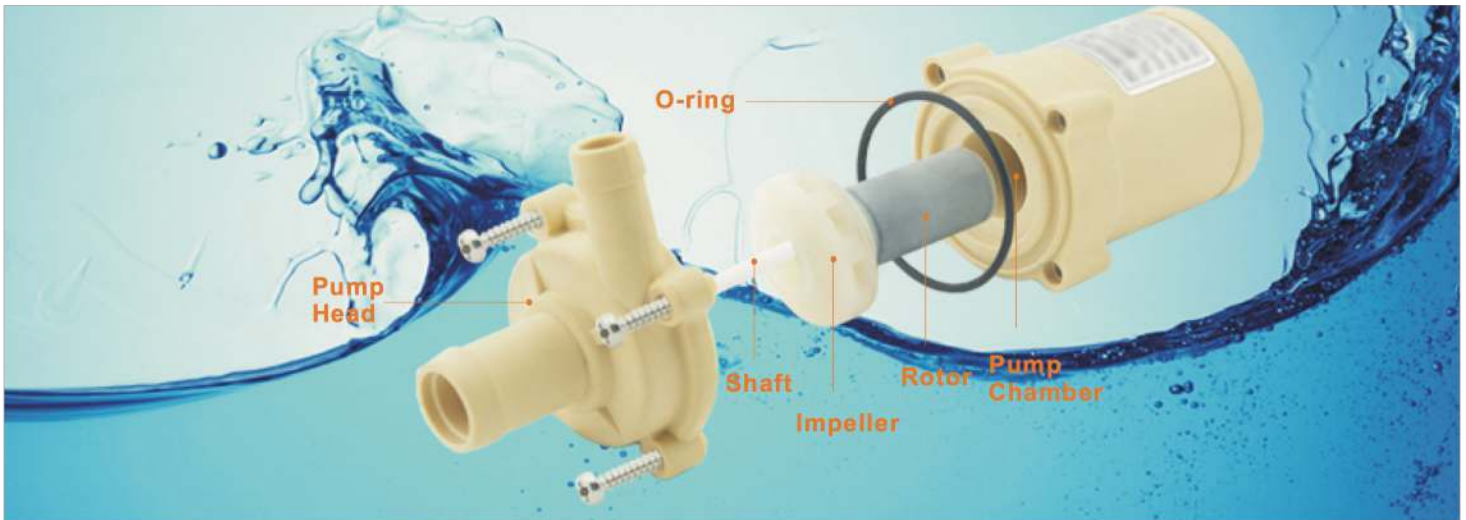
- FDA approved materials
- Sustain 100 °C hot water
- 24hours Continuous Duty
- Quiet noise 30dB



Features

- Advanced magnetic driving technology for static-seal, without any leakage forever
- High efficiency ECM brushless DC motor with long lifetime 20,000hours
- Heavy duty work, can sustain continuous 24hours work
- Special designed high efficiency closed-impeller for low power consumption
- Motor widely voltage designed suitable for battery power supplying with peak-low voltage damply
- All wetted materials FDA approved to be safety usage
- Durable permanent magnetic rotor/impeller and fine ceramic shaft
- Low or no maintenance
- IP protection level: IP68, submersible directly
- Blocked protection

Food Grade Pump



Materials of Construction (wetted parts)

Wetted Parts	Materials
pump head	PPE
pump chamber	PPE
O-ring	silicon rubber
rotor plastic	PA
shaft	fine ceramic
bearing sleeve	graphite
gasket	graphite

Note: A3 has the same structure & materials with B3

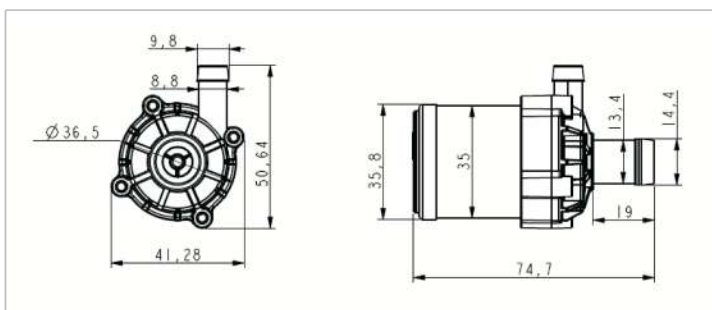
Typical Application

- Water dispenser/water coolers
- Coffee maker/coffee machine
- Beverage dispenser/juice machine
- Water purifier/water dispenser
- Tea maker
- Milk dispenser

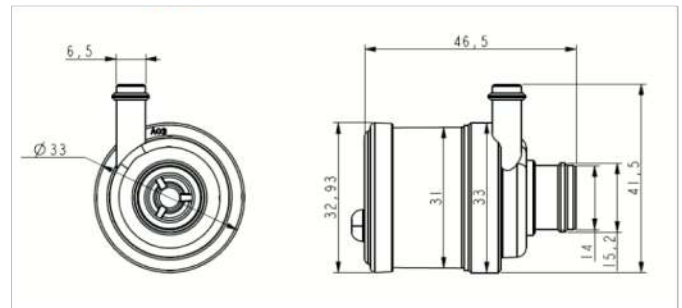


Dimension

B3



A3



Food Grade Pump

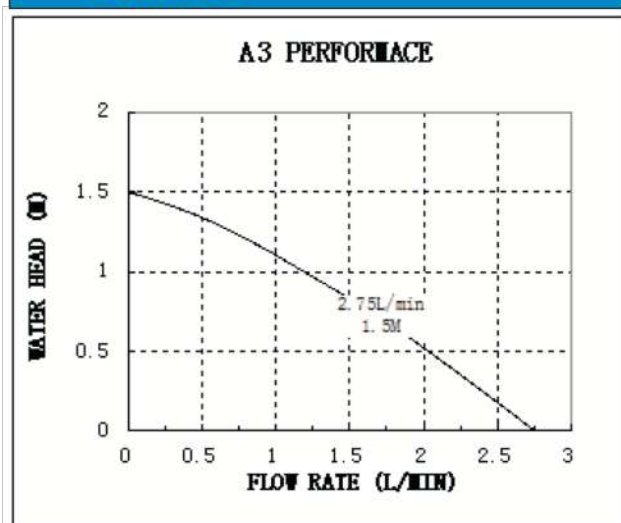
Specifications

Model	Product Code	Inlet/Outlet (mm)	Max Flow Rate (L/Min)	Voltage (VDC)	Current (A)	Max Water Head (M)	Power (W)
A3	A3H-6-0302	14/6.5	2.75	6	0.3	1.5	1.8
	A3H-12-0302	14/6.5	2.75	12	0.4	1.5	5
B3	B3H-12-0401	13.4/8.8	4.5	12	0.25	1.5	3
	B3H-12-0602	13.4/8.8	6.5	12	0.4	2.5	5
	B3H-24-0401	13.4/8.8	4.5	24	0.15	1.5	3.6
	B3H-24-0602	13.4/8.8	6.5	24	0.2	2.5	5

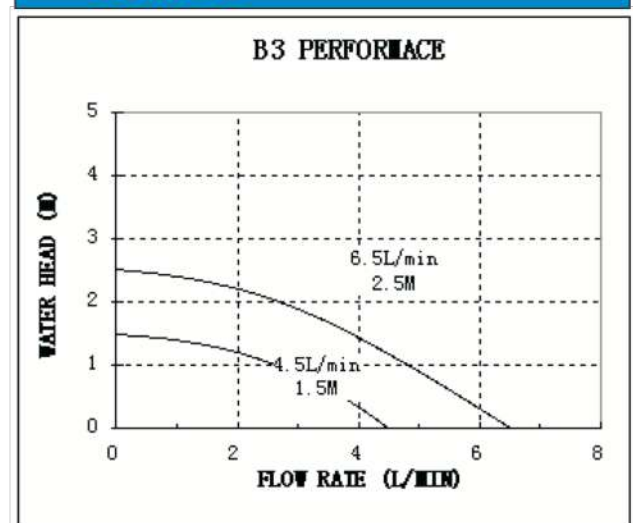
Note: pump itself meet: /H /F/S (high temperature 100°C for surface / food grade / if submersible water temperature ≤50°C)

RPM can be customized if needed.

A3 curve



B3 curve



Other food grade pump specifications

Model	Product Code	Max Flow Rate (L/Min)	Voltage (VDC)	Current (A)	Max Water Head (M)	Power (W)
B4 (100°C)	B4H-12-0905	9	12	1.3	5	16
	B4H-24-0905	9	24	0.85	5	20
B8 (100°C)	B8H-12-0703	7	12	0.9	3.5	11
	B8H-12-1006	10	12	1.6	6	20
	B8H-24-0703	7	24	0.5	3.5	12
	B8H-24-1006	10	24	0.8	6	20
C1 (100°C)	C1H-12-1610	16	12	3	10	25
	C1H-24-1812	16	24	2.2	12	53