

MG300 Series / Magnetic Drive Micro Gear Pump (DC brushless motor, outside controller)

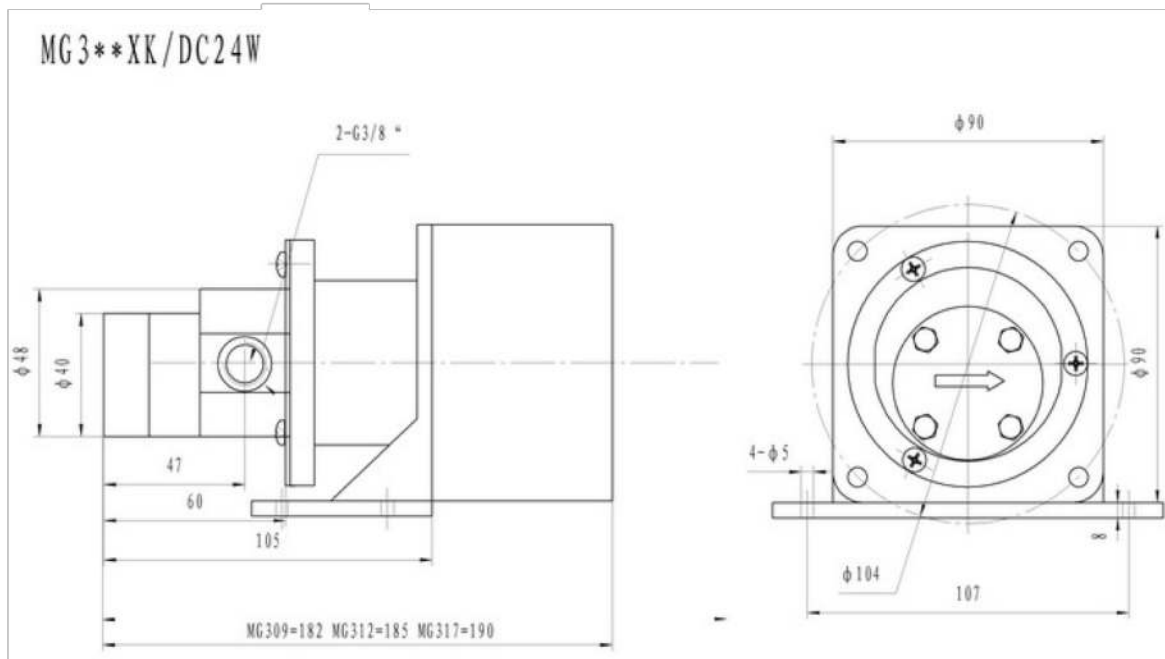
Introduction:

1. Magnetic gear pumps, using magnetic coupling drive without leakage, 316 stainless steel shell, PEEK material gear, PTFE materials for the static sealing and bearing. Use brushless DC motor with smaller size, the flow can be realized adjustment without steps, and can realize the quantitative flow rate when combination with the computer.
2. Pump can be used in the -0.1 Mpa~2Mpa closed systems, the rated output pressure is 0.5 Mpa (medium: water), the highest output 1.0 Mpa pressure, flow rate 1000~6000 ml / min.
3. Widely used in medical machinery, fine chemicals, water treatment printing, cleaning, packaging, food processing, and other areas of liquid delivery



Normal Parameters:

1. Altitude: ≤ 2500 M
2. Humidity environment: $\leq 85\%$
3. Fluid viscosity: 0 ~ 3000 CPS
4. Ambient temperature: -10 ~ 50 °C
5. Fluid temperature:
-10 °C $\leq T \leq 100$ °C (except for the freezing)
6. Working way: continuous working
7. Apply the media of:
acid and alkali, salt, organic solvents, oils.
8. Lifetime above 8000hours



Model	Max Head Pressure (Bar)	Max Flow scope (ml/Min)	Power (W)	Voltage (V)	Inlet/Outlet Diameter	ml/rpm (reference 3000RPM)
MG312XK/DC24W	10	500-5000	200	DC24	G1/4"	1
MG317XK/DC24W	8	800-6000	200	DC24	G1/4"	1.5

Note: 1. "04" means the gear with the height of 4mm, "09" means 9mm, "13" means 13mm .
2. if needed : "L" limited pressure valve, " R " non return valve , please specially specify in advance.